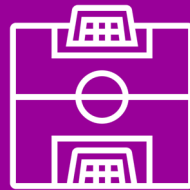


MONKSEATON  
HIGH SCHOOL



# SIXTH FORM guide



# INTRODUCTION

**W**elcome to Monkseaton High School Sixth Form. We would like to thank you for considering us for what is an important stage in your life.

At Monkseaton we offer a curriculum that provides an appropriate balance between 'traditional academic' subjects and 'vocational' pathways to meet the needs, interests and ambitions of all our students. Whether you're aiming to go into further education, an apprenticeship or employment; we offer a range of courses to suitable for all pathways.

What we offer:

- Fully inclusive Sixth Form that is focused around the individual
- Academic, vocational and combined pathways of study
- An opportunity to study for 3 or 4 Qualifications and the Extended Project Qualification (EPQ)
- A curriculum designed for students to access one or more of the industry growth areas in the North East (Digital, Health and Life Sciences, Advanced Manufacturing & Energy)



- Classes, small enough to know each of you well
- Subject specialist teachers
- Teachers who have a thorough understanding of the transition between GCSE and Sixth Form courses
- ICT suite dedicated for Sixth Form independent learning
- GCSE Re-sit Maths and English alongside a L3 Sport or Health and Social Care programme
- A dedicated team of tutors to support you throughout your time in the Sixth Form
- UCAS support
- Visits to Universities and apprenticeship fairs
- One to one Careers advice from our onsite Connexions Adviser
- Work Experience
- Wide range of enrichment Opportunities
- Fantastic Facilities
- A strong sense of community



# PATHWAYS

**We are unique in offering both academic, vocational and combined pathways on one site, ensuring that every student has a potential route**

**Post-16.** Academic courses are AS and A Levels, which involve two years of study with an examination assessment at the end. Vocational courses are assessed through a combination of assignments and examinations on a number of different units.

The **Academic Pathway** is usually taken by students who have achieved mainly 9 -7 grades in all subjects. Students on this pathway go on to apply for university after Sixth Form.




The **Combined Pathway** allows students the freedom to combine A Levels and vocational courses. This provides flexibility to access a pathway with a combination of exam and coursework assessment, whilst having the option for many different routes post 18, including university, apprenticeships and employment. Students who access the Combined Pathway will largely have achieved grades 4-6 or Merit grades.

The Level 3 **Vocational Pathway** allows students to specialise in one or more subject areas. This pathway leaves the option of university open. Students can also access apprenticeships and direct employment after sixth form. Students who access these courses usually have five 9-4 grades.

The Level 3 **Foundation Vocational Programme** of Study is for students who need to re-sit GCSE English and Maths. Alongside these subjects you can study either vocational Sport or a combination of Health and Social subjects ( both 3 A level equivalent, see entry requirements.)





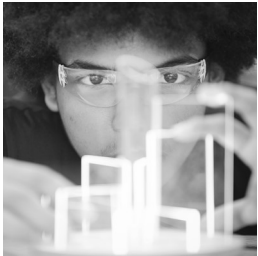
## Academic Pathway

Pathway	Courses			Potential Careers
 <b>STEM and medical</b>	<b>Biology</b>	<b>Chemistry</b>	<b>Maths</b>	Medicine Biomedical Science Biochemistry Engineering Careers in the NHS Primary Teaching Pharmacy Psychology
	<b>Product Design</b>	<b>Physics</b>	<b>Psychology</b>	
 <b>Humanities</b>	<b>English Language</b>	<b>English Literature</b>		English Literature History Geography Law Politics English Primary Teaching
	<b>History</b>	<b>Psychology</b>	<b>Sociology</b>	
 <b>Maths and Business</b>	<b>Business Studies</b>			Maths Accountancy Business Studies Management Economics
	<b>Maths</b>	<b>Physics</b>		

# PATHWAYS

## Combined Pathway

Pathway	Courses			Potential Careers
 Creative	Art	Maths	BTEC Digital Media	Graphic Designer Video Game Designer Animator Illustrator Artist Theatre Design Architect Photographer
	Physics	Product Design		
 Health Professions	Biology	BTEC Child Care	Sociology	Nursing Criminology Psychology Occupational Therapy Sports Science Primary Teaching Teaching Assistant
	BTEC Health and Social Care	Psychology		
	BTEC Sport			





## Vocational Pathway

### Pathway

### Courses

### Potential Careers



**Health  
Professions**

**BTEC Health and Social Care (2 A levels)**  
**BTEC Health and Social Care (1 A level)**  
**BTEC Children's Play, Learning and  
Development (1 A level)**

Nursing and Midwifery  
(a science must be  
taken alongside Health  
and Social Care)  
Childcare  
Childhood Studies  
Primary Education



**BTEC Design Media (1 A Level)**

Digital Marketing  
Multimedia Planner  
Web Designer  
App Developer  
Games Design





**Sport**

**BTEC Sport (1 A level)**

Sports Science  
Coaching  
Nutrition  
Psychology

# PATHWAYS

## Foundation Vocational

Pathway	BTEC Courses	GCSEs	Potential Careers
 <b>Health Professions</b>	<b>BTEC Health and Social Care (2 A levels)</b> <b>BTEC Health and Social Care (1 A level)</b> <b>BTEC Child Care (1 A level)</b>	<b>English</b> <b>Maths</b>	Nursing and Midwifery (a science must be taken alongside Health and Social Care) Childcare Childhood Studies Primary Education
 <b>Sport</b>	<b>BTEC Sport (1 A level)</b>	<b>English</b> <b>Maths</b>	Sports Science Coaching Nutrition Psychology



# CAREERS



## **Our aim at MHS Sixth Form:**

To provide all students with the most up to date careers information, advice and guidance and opportunities to explore the world of work. We want all of our students to be able to make fully informed decisions about their next steps.

## **What are your options after MHS Sixth Form?**

After completing your studies at MHS Sixth Form you have 4 main pathways:

### **University**

You may opt to go to university, at home or abroad, to complete an undergraduate degree in an area of interest. Whatever you decide to study you will need to complete a UCAS application and meet the academic entry requirements for your course.

### **Apprenticeship**

If you feel that you are ready for the workplace but still want to learn and gain further qualifications, you may choose to begin an apprenticeship. There are 4 types of apprenticeships available in the UK.

Intermediate apprenticeships (Level 2) - equivalent to GCSEs

Advanced apprenticeships (Level 3) - equivalent to A Levels

Higher apprenticeships (Level 4 and above)

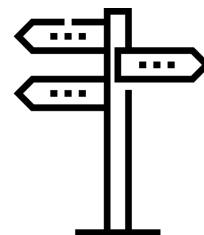
Degree apprenticeships (Levels 5 — 7)

### **FE College**

You may opt to study a foundation degree through an FE college – this involves two years of study at the college before completing your final year at a university.

### **Employment**

If you decide that you no longer want to continue any form of academic study, you could go straight into employment. Picking the right employer can give you plenty of opportunity to progress throughout your career.



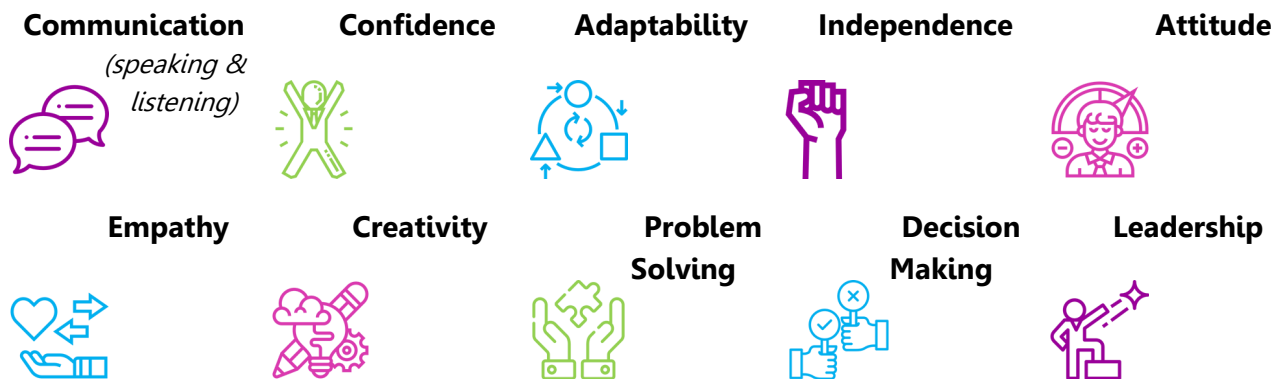
# CAREERS

## Transferable Skills

Whatever pathway you decide to pursue after MHS Sixth Form it is vitally important that you are able to show that you have a diverse range of transferable skills that make you stand out from the crowd.

## What are transferable skills?

These are skills that you gain and develop which can be used in a range of contexts. These differ from academic skills (e.g. analysis, evaluation) and are needed to help you effectively adapt to your surroundings and work well with others.



## How can these be developed?

Transferable skills can be developed both in and out of the classroom. Alongside your academic studies at MHS Sixth Form we offer a diverse range of enrichment opportunities. These opportunities offer a fantastic way to develop your skills.



## **Where can you find out more about the careers in which you are interested?**

### **Useful links for careers advice and guidance:**

[www.how2Become.com](http://www.how2Become.com)

[www.inspiringthefuture.org](http://www.inspiringthefuture.org)

[www.nationalcareersservice.direct.gov.uk](http://www.nationalcareersservice.direct.gov.uk)

[www.prospects.ac.uk](http://www.prospects.ac.uk)

[www.myworldofwork.co.uk](http://www.myworldofwork.co.uk)

[www.princes-trust.org.uk](http://www.princes-trust.org.uk)

[www.unifrog.org](http://www.unifrog.org)

### **Useful links for apprenticeships:**

[www.apprenticeships.gov.uk/](http://www.apprenticeships.gov.uk/)

[www.gov.uk/apply-apprenticeship](http://www.gov.uk/apply-apprenticeship)

[www.apprenticeshipguide.co.uk](http://www.apprenticeshipguide.co.uk)

### **Useful links for university and UCAS applications:**

[www.ucas.com](http://www.ucas.com)



# ENRICHMENT

**As well as academic success**, we believe making sure they enjoy their time in sixth form is vital in preparing our students for the next steps post-18. Students are encouraged to take part in the many enrichment and extra-curricular activities that are provided in school.

The enrichment and extra-curricular programme has been designed to develop skills that are desirable to universities, apprenticeship providers and employers. The extra-curricular and enrichment opportunities on offer include:

- Lower School Reading Support Programme
- Coaching Qualifications
- Debating Society
- Volleyball Club
- Badminton Club
- Netball Club
- Fitness Suite
- In Class Support
- Creative Writing Group
- Extended Project Qualification (EPQ)
- Young Enterprise
- Further Maths
- Art and Photography Club
- School and Sixth Form Council
- Work experience and careers events





# FASTEST GROWING INDUSTRIES IN THE NORTH EAST

**Ensuring our students' ambitions reflect** the opportunities available to them is a key priority for us at Monkseaton High School. In the North East, four industry sectors have been identified as important areas, where there will be many career opportunities in the near future: Energy, Advanced Manufacturing, Digital, and Health and Life Sciences.

In addition, four service sectors have also been identified as offering significant job opportunities in the North East: Education, Finance and Business, Transport and Logistics, and Construction. It is therefore imperative that students' subject choices in school reflect the career and job opportunities available to them in the future. The North East Local Enterprise Partnership, through their Strategic Economic Plan for the North East, aim to create 100,000 new and better jobs in these sectors by 2024.



Energy



Advanced Manufacturing



Digital



Health and Life Sciences

"We are delighted that Monkseaton Sixth Form is helping its students to think about their futures and the huge number of opportunities that are available for them within the North East."

**Michelle Rainbow, Skills Director**

"The school has become an important member within our community of career hubs, working hard alongside other schools in the region to achieve the Good Career Guidance benchmarks."

**Matt Joyce, Regional Lead North East LEP**



The **Energy** Sector focuses on developing renewable and clean energy sources for the future as well as refining oil and gas industries to be more efficient and climate friendly. In the North East, we are at the forefront of developing and testing sub-sea machinery, wind turbines and tidal technologies.

**Fact:** 79 research projects, funded with £46.2m.

**Subjects:** Maths, Product Design, Physics, Chemistry, Computing

The **Digital** Sector comprises of businesses that develop and deliver digital services. This can involve working on anything from games design to cyber security to web development and software design. It is a rapidly growing sector that offers great opportunities to work creatively on cutting edge technologies.

**Fact:** Over 29,000 employees and adds £2bn to North East economy

**Subjects:** Digital Media, Computing, Photography

The **Advanced** Manufacturing Sector is responsible for using new technologies to make products including: medicines, machinery, vehicles and parts for cars and trains. Job roles can vary from working in a laboratory to working with electronics in a car plant.

**Fact:** 510,000 cars built in North East; 26% of all electric vehicles

**Subjects:** Maths, Product Design, Physics, Chemistry, French, Spanish, Computing

The **Health and Life Sciences** sector revolves around developing our understanding of human health and wellbeing. In the North East we pioneer research into new technologies and treatments that can positively impact the health and wellbeing of people worldwide.

**Fact:** Between 2008 and 2018, North East institutions secured £122m from the Medical Research Council.

**Subjects:** Biology, Health & Social Care, Chemistry, Physics, Maths



# ART, CRAFT & DESIGN

You will have the opportunity to work in a range of ways including: Fine Art, Graphics and 3D Design. You will explore images, artefacts and resources relating to a range of art, craft and design, from the past and from recent times, including European and non-European examples. This will be integral to the investigating and making processes. Your responses to these examples will be shown through exciting and innovative practical and critical activities that demonstrate your understanding of different styles, genres and traditions.



## CAREERS INCLUDE:

- Fine Artist
- Illustrator
- Conservator
- Art Valuer
- Art Technician
- Art Therapist
- Architect
- Theatre Set Designer
- Film Set Designer
- Interior Design
- Web Designer

## DID YOU KNOW?



**Almost 1 in 8 UK businesses are creative businesses**



**The Creative Industries contribute £111.7bn gross value added to the UK economy**



**The Creative Industries are growing at more than 5x the rate of the UK economy as a whole**





**Nikita says**

### **GOES WELL WITH:**

- DIGITAL MEDIA
- ENGLISH LANGUAGE
- ENGLISH LITERATURE
- HISTORY

### **ENTRY REQUIREMENTS**

5 GCSEs grade 9-5

Grade 5+ in a creative or practical subject

“

I really enjoyed the opportunity of getting to develop and refine techniques I had started at GCSE and to explore my own personal style in more depth.

”

# BIOLOGY

The A Level course provides you with a comprehensive journey through the systems that control and manage living organisms. This includes: Biological molecules and their universal nature; Cells as the building blocks of life; Exchange of substances between organisms and the environment; DNA, genetic information and variation; Energy transfers in and between organisms; How organisms respond to changes in both the internal and external environments; Genetics, evolution and the formation of new species; The control of genes and applications of genetic technology in medicine.



## CAREERS INCLUDE:

- Biologist
- Forensic Scientist
- Neuroscientist
- Microbiologist
- Optometrist
- Ecologist
- Radiographer
- Pathologist
- Biotechnologist
- Doctor/GP/Surgeon
- Nurse/Midwife
- Marine Biologist
- Researcher
- Teacher/Lecturer
- Zoologist
- Dentist

## DID YOU KNOW?



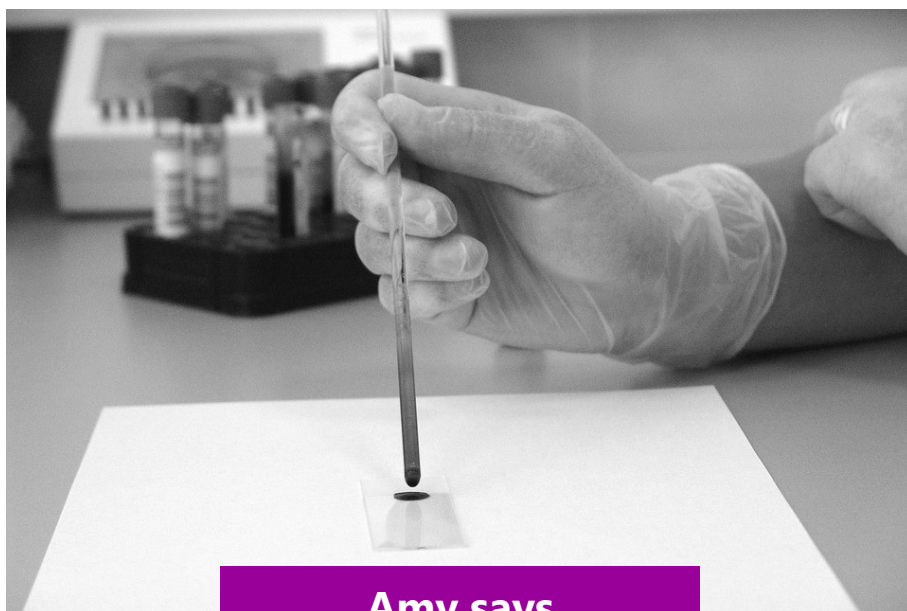
**The average salary for a Biologist in the UK is £33,761**

<https://www.indeed.co.uk/salaries/biologist-Salaries>



**Approximately 90% of all radiographers in the UK are employed by the NHS**

<https://www.prospects.ac.uk/job-profiles/diagnostic-radiographer>



**Amy says**

### **GOES WELL WITH:**

- PSYCHOLOGY
- CHEMISTRY
- PHYSICS
- MATHS

**“** Biology is the gateway to understanding living organisms, it's about us and the world around us – what could be more important?' 'I know universities view an A-level in science in high regard.

**”**

### **ENTRY REQUIREMENTS**

Students must achieve at least grade 6/6 Combined Science or grade 6 in GCSE Biology. Students should also achieve at least a grade 6 in GCSE Mathematics.

# BUSINESS STUDIES

You will study a range of units throughout the courses which will include a variety of topic areas including Marketing, Finance, Human Resources, IT and Operations.

Some of the units covered include:

- What is business? Objectives and strategic decisions
- External influences facing business
- Marketing and marketing strategies
- Operational strategy
- Human resources
- Accounting and financial considerations
- The global environment of business.



## CAREERS INCLUDE:

- Facilities Manager
- Supply Chain Manager
- Purchaser
- Project manager
- Chief Executive
- Marketing Executive
- Business Analyst
- Retail Merchandiser
- Sales Representative
- Stockbroker
- Finance Manager
- Insurance Broker

## DID YOU KNOW?



**The average Finance Manager salary in the UK is £50,603**

[reed.co.uk/average-salary/average-finance-manager-salary](https://reed.co.uk/average-salary/average-finance-manager-salary)



**The retail industry employs around 3 million people.**

[prospects.ac.uk/job-profiles/retail-merchandiser](https://prospects.ac.uk/job-profiles/retail-merchandiser)



**As marketing is a core element of organisations, you can find opportunities across all sectors**

[prospects.ac.uk/job-profiles/marketing-executive](https://prospects.ac.uk/job-profiles/marketing-executive)



**Harry says**

### **GOES WELL WITH:**

- MATHS
- DIGITAL MEDIA
- HISTORY
- PSYCHOLOGY

“ The lessons are very enjoyable and teachers are knowledgeable linking theory to the real world of work. When I have faced difficulties the teachers are very understanding and supported me through.

”

### **ENTRY REQUIREMENTS**

Students must have five 9-5 grades at GCSE or equivalent (including at least a 5 grade or Merit in a Business subject) and have a keen interest in the Business world.

# CHEMISTRY

The course is designed to give you an understanding of some of the fundamental ideas in Chemistry and provide a comprehensive journey through the systems that control and manage living organisms, including:

**Physical Chemistry:** Atomic Structure and Bonding; Thermodynamics, rate equations and acids and bases

**Inorganic Chemistry:** The alkaline earth metals (group 2) and halogens (group 7) of the periodic table; Transition metals and the reactions of ions in aqueous solution

**Organic Chemistry:** The structure and properties of alkanes, alkenes and alcohols; Polymers, aldehydes, ketones and carboxylic acids.



## CAREERS INCLUDE:

- Pharmacist
- Chemical Engineer
- Pharmacologist
- Nuclear Engineer
- Clinical Scientist
- Toxicologist
- Forensic Scientist

## DID YOU KNOW?



In 2017, consumers in the United Kingdom spent over 5.7 billion British pounds on medicinal products.

[statista.com](https://www.statista.com)



As a toxicologist you could work for private companies in a range of industries, government departments, contract research organisations (CROs) and consultancies.

[prospects.ac.uk/job-profiles/toxicologist](https://prospects.ac.uk/job-profiles/toxicologist)



**Tom says**

### **GOES WELL WITH:**

- BIOLOGY
- MATHS
- PHYSICS
- PRODUCT DESIGN

“

This is such a diverse subject – you are doing difficult Maths equations and then Organic mechanisms in one week .You have to constantly read over the work to keep up but it's very rewarding and you feel satisfaction when you 'get ' some difficult topic.

”

### **ENTRY REQUIREMENTS**

Students must achieve at least grade 6/6 Combined Science or grade 6 in GCSE Chemistry. Students should also achieve at least a grade 6 in GCSE Mathematics.



# CHILDREN'S PLAY AND LEARN

The course provides you with an understanding of a child's growth and development from birth up to 8 years-old. You will also consider theories and models of development and how they can be applied to childcare practice, as well as the factors which influence a children's development and the importance of recognising atypical development. You will study the physical development and care needs of children and approaches to their healthy development

In addition to your studies in school, you will also be required to complete a 50 hour work placement in a relevant childcare setting.



## CAREERS INCLUDE:

- Play therapist
- Teaching Assistant
- Youth Worker
- Learning Mentor
- Family Support Worker
- Social Worker
- SEN Teacher
- Early Years Teacher
- Nurse
- Nursery Worker

## DID YOU KNOW?



**The number of people employed in the UK child day care sector has grown from 110,000 in 2008 to over 200,000 in 2016-17.**



**The total turnover of child day care activities was over £4.3 billion.**

[tutor2u.net/economics/  
reference/revenues-the-uk-  
child-day-care-industry](http://tutor2u.net/economics/reference/revenues-the-uk-child-day-care-industry)



# ING DEVELOPMENT



**Erin says**

## **GOES WELL WITH:**

- HEALTH AND SOCIAL CARE
- ENGLISH LANGUAGE
- BIOLOGY
- ART

“

Each lesson is varied and engaging. I have learnt so much since starting.

”

## **ENTRY REQUIREMENTS**

Students must have five 9-4 grades at GCSE (including English and Maths). Allowances will be made for students who have achieved a Merit at the Level 2 Tech Award for Health & Social Care .

# DIGITAL MEDIA DESIGN

You will develop the skills, knowledge and understanding that you need to succeed in the Digital Media sector, which includes creative design in media products such as; digital games, animation and online interactive technologies.

You will create conceptual ideas, and visualise these all the way from planning and pre-production to editing, postproduction and presentation of products. You'll also learn how to analyse target audience requirements, research market demand and bring a media concept to life.



## CAREERS INCLUDE:

- Game Designer
- Digital Layout Artist
- Digital Graphic Designer
- Freelance Reporter
- Web-developer/ Designer
- Animator
- Computer Graphics Modeller
- Scriptwriter
- Comic/Graphic Novel Creator

## DID YOU KNOW?



**Industry to be worth  
£80bn by 2024**

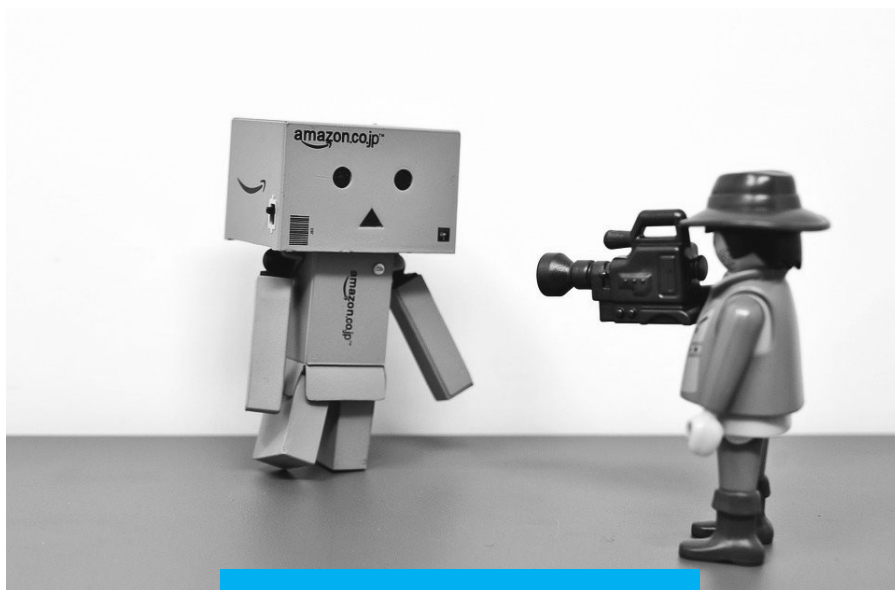


**Video gaming  
is digital media's  
largest income  
generator**



**Average graduate  
starting salary of  
£31,500 at major  
employers**

[pwc.co.uk/industries/  
entertainment-media/  
insights/entertainment-media  
-outlook.html](https://pwc.co.uk/industries/entertainment-media/insights/entertainment-media-outlook.html)



Emily says

### GOES WELL WITH:

- ART
- ENGLISH LANGUAGE
- ENGLISH LITERATURE
- PRODUCT DESIGN
- SOCIOLOGY

“

I have really enjoyed the practical nature of this course and my design skills have developed to a very high standard. I feel confident about moving to the next level at university as I have had a great foundation here.

”

### ENTRY REQUIREMENTS

Students need five grade 9-4 at GCSE. It will also be beneficial to have taken a creative subject such as Media Studies, ICT, Art, etc., but this is not a requirement.

# ENGLISH LANGUAGE

This course will introduce you to methods of exploring and analysing spoken and written language. You will explore a variety of texts from everyday use and how language is used to meet the needs of audience and purpose. You will also learn how to write for a range of purposes, audiences and genres.

In addition, you will study how children learn language and how they understand and express themselves in speech and writing. you will explore how and why the English language has changed by studying a variety of spoken and written texts dating from 1600 onwards.



## CAREERS INCLUDE:

- Publishing Editor
- Teacher
- Barrister
- Solicitor
- Conveyancer
- Paralegal
- Author
- Media Researcher
- Librarian
- Journalist
- Lexicographer

## DID YOU KNOW?



**The average salary for a Journalist is £25,210 per year in the United Kingdom.**

[indeed.co.uk/salaries/journalist-Salaries](https://indeed.co.uk/salaries/journalist-Salaries)



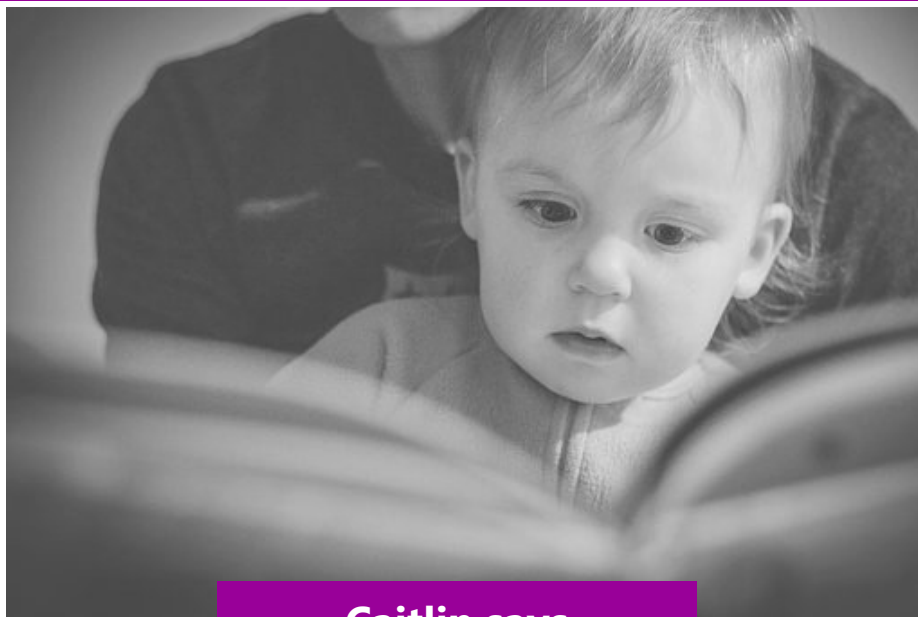
**There are 85 thousand authors, writers and translators in the United Kingdom.**

[statista.com](https://statista.com)



**There are currently more than 149,000 practising solicitors in England and Wales**

[prospects.ac.uk/job-profiles/solicitor](https://prospects.ac.uk/job-profiles/solicitor)



**Caitlin says**

### **GOES WELL WITH:**

- ENGLISH LITERATURE
- HISTORY
- DIGITAL MEDIA
- SOCIOLOGY
- CHILD CARE

“

The study of English Language really changes your perspective about how and why we communicate and the importance of words. Nothing can restrict language and it can be used and shaped for any purpose. I find the work we have done fascinating.

”

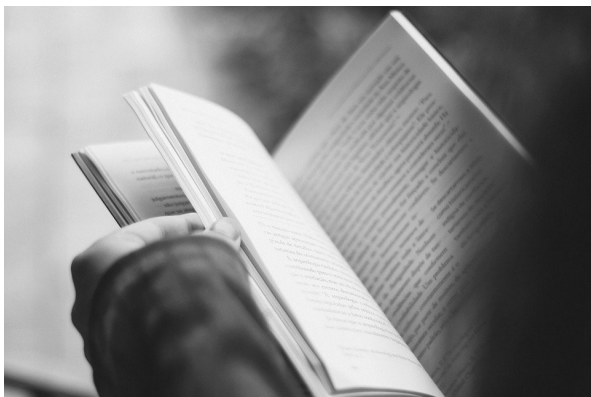
### **ENTRY REQUIREMENTS**

Students must have five 9-5 grades at GCSE, with at least a grade 5 for English Language

# ENGLISH LITERATURE

You will explore and analyse literature through Drama, Poetry and Prose. You will study 'Death of a Salesman' by Arthur Miller, 'King Lear' by William Shakespeare, a wide selection of poetry and 'Tess of the D'Urbervilles' by Thomas Hardy.

You will also explore 'Political and Social Protest Writing' through 'The Handmaid's Tale' by Margaret Atwood, 'The Kite Runner' by Khaled Hosseini and 'Songs of Innocence and Experience' by William Blake. You will consider different contexts that novels and poetry are written in and how this impacts upon writers.



## CAREERS INCLUDE:

- Author
- Librarian
- Journalist
- Teacher
- Publishing Editor
- Barrister
- Copywriter
- Lawyer

## DID YOU KNOW?



There are currently 506,400 full-time teachers in the UK. 216,500 work in primary schools, 208,300 work in secondary schools

[besa.org.uk/key-uk-education-statistics/](https://besa.org.uk/key-uk-education-statistics/)



The average salary for a librarian in the UK is £28.697

[careersmart.org.uk/occupations/librarians](https://careersmart.org.uk/occupations/librarians)



Owen says

### GOES WELL WITH:

- ENGLISH LANGUAGE
- HISTORY
- DIGITAL MEDIA
- SOCIOLOGY
- PSYCHOLOGY

“

I'm so pleased that I chose this course; reading has always been something I enjoy. The study of English Literature has afforded me the opportunity to discover new texts and learn more about the different genres of literature, as well as the differing social contexts that affected writers' ideas.

”

### ENTRY REQUIREMENTS

Students must have five 9-5 grades at GCSE with at least a grade 5 for English Literature.



# HEALTH AND SOCIAL CARE

The Extended Certificate (1 A Level equivalent) and Diploma (2 A Level equivalent) are both 2-year courses. You should have a keen interest in the health & social care profession. Many people choose this course when looking into Midwifery, Nursing, Social work and teaching amongst many others.

You will investigate a range of topics, including: human Lifespan development; working in health and social care; meeting individual care and support needs; work experience in health and social care; and enquiries into current research in health and social care.



## CAREERS INCLUDE:

- Social worker
- Nursing
- Community care worker
- Paramedic
- Therapy support worker

## DID YOU KNOW?



**There are over 350 jobs roles in the Health and Social Care sector?**



**The NHS is Europe's biggest employer and the fifth biggest in the world. Nearly 1.5 million patients interact with the NHS every 24 hours**

[princes-trust.org.uk/help-for-young-people/programmes/health-and-social-care-hub/the-health-and-social-care-sector](https://princes-trust.org.uk/help-for-young-people/programmes/health-and-social-care-hub/the-health-and-social-care-sector)





**Madeline says**

### **GOES WELL WITH:**

- CHILDCARE
- PSYCHOLOGY
- BIOLOGY
- ART

“

The subject is really interesting as you learn about real life case studies and situations.

”

### **ENTRY REQUIREMENTS**

Students must have 5 9-4 grades at GCSE level, including maths and English, and have a keen interest in health and social care

# HISTORY

This qualification is a two-year full time course. You should choose A-level History if you have a passion for investigating the past, reading, discussion and analysing current affairs.

You will study a range of units throughout the AQA A-Level course, which will include:

- Tsarist and Communist Russia, 1855–1964
- Wars of the Roses c. 1450-1499
- Historical Investigation— A personal study of 4,000 words based on a topic of student's choice. This should take the form of a question in the context of approximately 100 years.



## CAREERS INCLUDE:

- Law
- Journalism
- Archaeology
- Cultural Heritage
- Sociology
- Politics
- Teaching

## DID YOU KNOW?



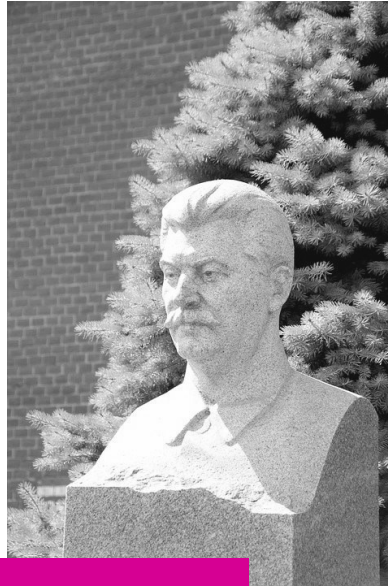
**There are over 80 job titles in archaeology and the job is not necessarily about digging and carrying out excavations.**

[prospects.ac.uk/job-profiles/archaeologist](https://prospects.ac.uk/job-profiles/archaeologist)



**Around 80% of barristers are self-employed. Earnings can vary significantly depending on location, experience and your employer!**

[prospects.ac.uk/job-profiles/barrister](https://prospects.ac.uk/job-profiles/barrister)



**Sam says**

“

History is very valuable as a subject and I find it enjoyable. The lessons are unique and interesting.

”

### **GOES WELL WITH:**

- ENGLISH LANGUAGE
- ENGLISH LITERATURE
- DIGITAL MEDIA
- ART

### **ENTRY REQUIREMENTS**

Five 9-5 grades at GCSE. Students should have at least grade 5 in GCSE History and English Language or Literature. If students have not studied History at GCSE, then they must have a grade 5 in English Language or Literature and another humanities subject.

# MATHS

Mathematics is a powerful means of communication. It is used to represent, to explain and to predict, and develops the power of concise logical thought. It contributes to the basis of scientific development and modern technology and is increasingly being used in a variety of fields such as physics, engineering, biology, medicine, geography, economics, business, finance, management and psychology. You should consider this course if you wish to study mathematics, science, engineering or medicine in higher education.



## CAREERS INCLUDE:

- Accountancy
- Economics
- Air traffic control
- Banking
- Stock broking
- Construction
- Teaching
- Surveyor
- Pharmacy

## DID YOU KNOW?



**In 2018, the construction contributed £117 billion to the UK economy.**

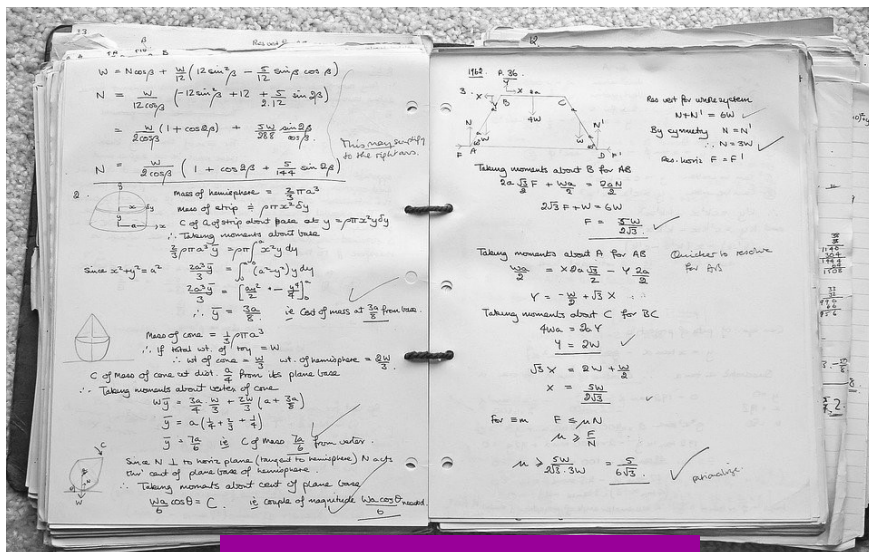
[commonslibrary.parliament.u](https://commonslibrary.parliament.uk/)

k/



**The main role of a corporate investment banker is to advise companies and governments on how to achieve their financial goals.**

[prospects.ac.uk/job-profiles/corporate-investment-banker](https://prospects.ac.uk/job-profiles/corporate-investment-banker)



Emma says

## GOES WELL WITH:

- BIOLOGY
- CHEMISTRY
- PHYSICS
- PRODUCT DESIGN
- BUSINESS STUDIES

“

It's not been easy! But I've really enjoyed the challenge of studying Maths. My teachers have been really supportive and always available for extra help.

”

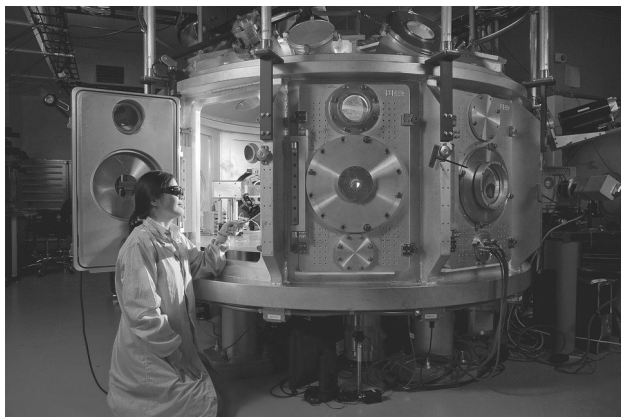
## ENTRY REQUIREMENTS

Grade 6 or above in GCSE Maths

Students also have the opportunity of studying Further Maths.

# PHYSICS

Why do we need precision and accuracy and why is that important for future engineers and physicists? Discover a range of new and exciting particles, their various uses in modern technology and about the weirdness of the quantum world. Can matter travel in waves? How does the technology that underpins cloaking work? Answer these questions by studying the behaviour of a variety of different waves. Are there materials strong enough to build a tower into space? You will study the behaviour of solid materials and be able to describe their motion to make predictions.



## CAREERS INCLUDE:

- Engineering
- Radiography
- Medicine
- Astronomy
- Computing
- Dentistry
- Renewable Energy scientist

## DID YOU KNOW?



**Research by the Centre for Economics and Business Research estimated that the engineering sector generated 25% of the UK's total GDP in 2015 (£420.5 billion).**

[engineeringuk.com/media/1576/7444\\_enguk18\\_synopsis\\_standalone\\_aw.pdf](http://engineeringuk.com/media/1576/7444_enguk18_synopsis_standalone_aw.pdf)



**Physical scientists overall UK median earnings: £43,605**

[unifrog.org/student/careers/keywords/physicist](http://unifrog.org/student/careers/keywords/physicist)





**Ben says**

### GOES WELL WITH:

- BIOLOGY
- CHEMISTRY
- MATHS
- BUSINESS STUDIES

“

I have developed many practical and problem-solving skills. I personally have enjoyed the circuit building practical in which we had to create our own device. This was an excellent insight into electrical engineering which is potentially one of the career paths that I may pursue

”

### ENTRY REQUIREMENTS

Students must achieve at least grade 6/6 Combined Science or grade 6 in GCSE Physics. Students should also achieve at least a grade 6 in GCSE Mathematics.

# PRODUCT DESIGN

Are you interested in the design of things around you? Do you realise that this course can lead on to careers in product design, architecture, automotive design, jewellery design, packaging design, fashion or engineering?

You will work on a substantial design and make project throughout year 13. Using the knowledge and skills built up during the course you create problem-solving designs for a real life situation. You then select the best design and make it. The project may be either Graphical or a working artefact.



## CAREERS INCLUDE:

- Architect
- Product designer
- Building technology
- Digital designer
- Engineer
- CAD technician
- Clothing/textile technologist
- Colour technologist
- Exhibition designer
- Furniture designer
- Interior and spatial designer

## DID YOU KNOW?



**Architects, town planners and surveyors**

**North East median earnings: £39,049**

[unifrog.org/student/careers/keywords/architect](https://unifrog.org/student/careers/keywords/architect)



**Structural engineers help to design and build large structures and buildings, like hospitals, sports stadiums and bridges.**

[unifrog.org/student/careers/featured/structural-engineer](https://unifrog.org/student/careers/featured/structural-engineer)





**Daniel says**

### **GOES WELL WITH:**

- DIGITAL MEDIA
- MATHS
- PHYSICS
- ART

“

Being able to understand more about the skills needed in design careers has been essential in helping me gain my place at university.

”

### **ENTRY REQUIREMENTS**

Students must achieve at least grade 5 in a technology or design based subject.

# PSYCHOLOGY

You will study topics including Social Influence, Memory and Attachment. This includes factors influencing obedience and conformity, nature and structure of memory as well as memory in everyday life, plus the relationship between caregiver-infant bond and the importance of this bond to development.

You will also explore some core themes in Psychology here including Approaches in Psychology, Psychopathology and Biopsychology. This will include Research Methods and will require students to think independently and apply their skills.



## CAREERS INCLUDE:

- Educational Psychology
- Medical Psychology
- Forensic Psychologist
- Counsellor
- Occupational Psychology
- Sport Psychology
- Clinical psychology

## DID YOU KNOW?



**Educational psychologists work young people who are experiencing problems that hinder their successful learning**

[prospects.ac.uk/job-profiles/educational-psychologist](https://prospects.ac.uk/job-profiles/educational-psychologist)



**Forensic psychology can be challenging but if you're resilient and willing to help and understand offenders, it could be your ideal career.**

[prospects.ac.uk/job-profiles/forensic-psychologist](https://prospects.ac.uk/job-profiles/forensic-psychologist)



**Libby says**

### **GOES WELL WITH:**

- SOCIOLOGY
- BIOLOGY
- MATHS
- HISTORY
- SPORT

“

Psychology allows you to view people differently. Studying Psychology has helped me to move on to the next step in my career to study Criminology.

”

### **ENTRY REQUIREMENTS**

Students must have five GCSEs at grade 5 or above, including English and Mathematics.

# SOCIOLOGY

Sociology is the study of society and the groups of people within it. The course allows you to gain understand about the structure and nature of different parts of society.

Within the Education and Methods unit, you will undertake the study of Education and how it has changed. You will also examine why some social groups such as girls and the middle class do better than others within education. As part of this unit, you will also study the research methods sociologists use and the strengths and limitations of such techniques. As part of the Families and Households topic you will learn about trends within family life in the UK, such as marriage and divorce rates.



## CAREERS INCLUDE:

- Politics
- Marketing
- Education
- Law
- Youth work
- Cultural Heritage
- Housing officer
- Community Development Officer

## DID YOU KNOW?



**There were 31,720 children and family social workers employed by local authorities in England as at 30 September 2018.**

[ethnicity-facts-figures.service.gov.uk](https://ethnicity-facts-figures.service.gov.uk)



**Youth workers guide and support young people aged 11 to 25. They organise activities to help with personal and social development.**

[nationalcareers.service.gov.uk/job-profiles/youth-worker](https://nationalcareers.service.gov.uk/job-profiles/youth-worker)



## GOES WELL WITH:

- ENGLISH LANGUAGE
- CHILDCARE
- HEALTH AND SOCIAL CARE
- HISTORY
- BUSINESS STUDIES



**Lucia says**

“

Sociology has helped me to understand the inequalities within society and how much life has changed throughout the years.

”

## ENTRY REQUIREMENTS

Students must have five GCSEs at grade 5 or above, including English.

# SPORT

This qualification is a two year full time course – it is equivalent to 3 A Levels. You should choose the course if you have a keen interest and a genuine enthusiasm for sport and all that it encompasses.

The course has a practical element so you will be required to actively participate in many sports and undertake a number of coaching and leadership sessions years . A knowledge of current sporting issues would also be beneficial.

You will study a range of units throughout the course which will include a variety of topics from Anatomy and Physiology to Fitness Training and Programming for Health, Sport and Well-Being.



## CAREERS INCLUDE:

- Sports Coach
- PE Teacher
- Sport and Exercise Scientist
- Strength and Conditioning Coach
- Sport Development Officer
- Sport Therapist
- Physiotherapist
- Sports Administrator

## DID YOU KNOW?



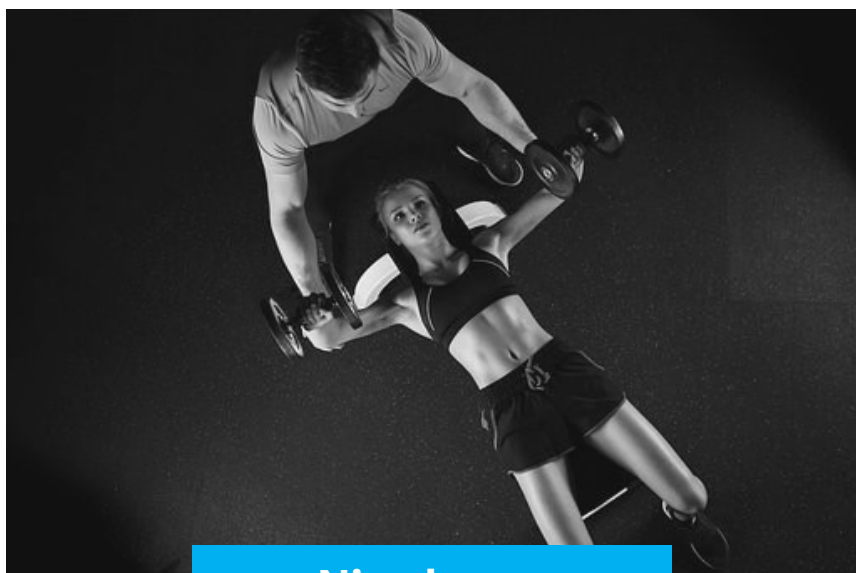
**Sport and physical activity contribute £39 billion to the UK's economy.**

[sportengland.org/why-were-here/economic-development](https://sportengland.org/why-were-here/economic-development)



**PE teachers can earn up to £38,663, not including any additional responsibilities they may take on.**

[prospects.ac.uk/jobs-and-work-experience/job-sectors/teacher-training-and-education/how-much-do-teachers-get-paid](https://prospects.ac.uk/jobs-and-work-experience/job-sectors/teacher-training-and-education/how-much-do-teachers-get-paid)



**Niamh says**

### **GOES WELL WITH:**

- BUSINESS STUDIES
- HEALTH AND SOCIAL CARE
- DIGITAL MEDIA

“

This subject was perfect for me as it really helped me achieve the grades I needed for University, the balance of theory and practical was great.

”

### **ENTRY REQUIREMENTS**

Students must have 5 9-4 grades at GCSE, including English, and have a practical commitment to sport.



# NEXT STEPS



To provisionally enrol:



[monkseaton.org.uk/sixth-form-hub](https://monkseaton.org.uk/sixth-form-hub)

For more info:



[monkseaton.org.uk](https://monkseaton.org.uk)



[@monkseatonhighschool](https://www.instagram.com/monkseatonhighschool)



[@monkseatonhigh](https://twitter.com/monkseatonhigh)

Contact us:



[office@monkseaton.org.uk](mailto:office@monkseaton.org.uk)



**0191 297 9700**

Thank you for taking the time to explore our Sixth Form. We hope this guide has given you the information you were looking for about Sixth Form life at Monkseaton High School.