

An abstract graphic consisting of numerous overlapping, semi-transparent lines of various colors (including purple, blue, green, yellow, and pink) radiating from a central point on the left side of the page. The lines create a complex, starburst-like pattern that fills the background.

**MONKSEATON**  
HIGH SCHOOL

Prospectus **2023**



“

Leaders have created a culture where 'equality, opportunity, inclusion and achievement' permeate the school community and are the cornerstone of their work

Ofsted 2019

”

A photograph of Monkseaton High School, a modern building with a large glass facade and a curved roof. The school's name is visible on the building. In the foreground, a group of five students (three girls and two boys) are walking. They are wearing school uniforms: light blue polo shirts and black skirts or shorts, and a bright pink polo shirt. The background shows a clear sky and some greenery.

MONKSEATON  
HIGH SCHOOL

Pupils are extremely respectful, tolerant and caring. Pupils' personal development and welfare are outstanding

Ofsted 2019

# Our Vision

To create an inclusive community of confident learners with a strong collaborative ethos, underpinned by high quality teaching and learning, honesty, and respect for others.

## All students at Monkseaton High School can expect to be:

- Valued for their achievements
- Actively involved in learning
- Educated in a safe and friendly environment
- Respected for their personal qualities
- Encouraged to play a meaningful part in the school and wider community
- Treated fairly by all
- Encouraged to stay healthy
- Given regular feedback and support

“


Pupils enjoy their time at school  
and they demonstrate this  
through their words and actions

Ofsted 2019

”



On behalf of our students, staff and the governing body I would like to thank you for taking the time to look at our prospectus and for considering our school. The best schools are those that ensure the young people within them are happy and safe and can flourish to be the best they can be. I believe we do exactly that and I am incredibly proud to be a part of the school community of Monkseaton High School.



We are a happy school; our students enjoy their learning and staff enjoy working with them. Our success is built on the foundation of strong relationships and an ethos of support that underpins all that we do; Equality, Opportunity, Inclusion and Achievement.

Individuals are encouraged to thrive, and ambition and aspiration are developed alongside self-confidence and positive self-esteem. We believe it is important to develop confident and considerate individuals who are aware of their role within the wider community and beyond. A community of young people who are respectful and considerate of others irrespective of background, culture or viewpoint. Our aim is for students to leave our school as caring and compassionate young adults with a range of interests and skills needed to adapt to the opportunities and challenges of the fast-changing world.

Over recent years we have seen our students achieve some of our best ever results and in August 2020 we continued to see our students make excellent progress. The vast majority of our post 16 students move on to their chosen destination, successfully gaining university places, scholarships and apprenticeships. We are very proud of these outcomes and are delighted that our young people are achieving their potential, regardless of starting points or any challenges they may have faced. This is testimony to the commitment and care staff here provide to enable all our young people to meet their personal targets and achieve their goals.

We pride ourselves on a number of distinctive features that make our school unique. We are a smaller than the average sized secondary school and this allows us to offer a truly inclusive ethos where the contribution of individual students is recognized, valued and celebrated. More importantly, it allows us to get to know each and every student as an individual and provide bespoke and personalised support to enable them to develop as happy and healthy young people.

Our building and facilities are state of the art, but inside, our approach is very much built on the foundation of our values: equality, opportunity, inclusion, achievement. We are a school family, where every child matters and is supported to enjoy their learning experience and to achieve their potential.

We understand how important the choice of school is and this prospectus will give you an introduction to the quality of education and opportunity that your child will experience at our school. We are very proud of our safe, purposeful and friendly working environment that provides the foundation for all our young people to thrive, not only as part of our community but as an individual.

Should you decide that is right the school for your son or daughter to flourish, I look forward to the next few years of our partnership.

**Jo Suddes**  
Headteacher

# Our School

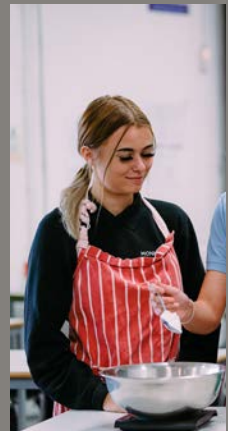
Our school enjoys **excellent, purpose-built, state of the art facilities** including a superb gym, three sports halls, a vast school playing field and modern, spacious science facilities.

The Music Department is fully equipped with instruments and has rehearsal rooms for students to practise, as well as a sound proof recording studio. The Art Department has three studios, a dark room and a kiln room. Design and Technology house up to date machinery to allow practical experiences across a wide range of disciplines. The school is rich in Information and Communications Technology, which allows all students the opportunity to develop personal ICT skills and to use these in a range of subjects across the curriculum to develop their learning further.



“The facilities at school are outstanding, they help me learn and keep me busy throughout the day”

Student



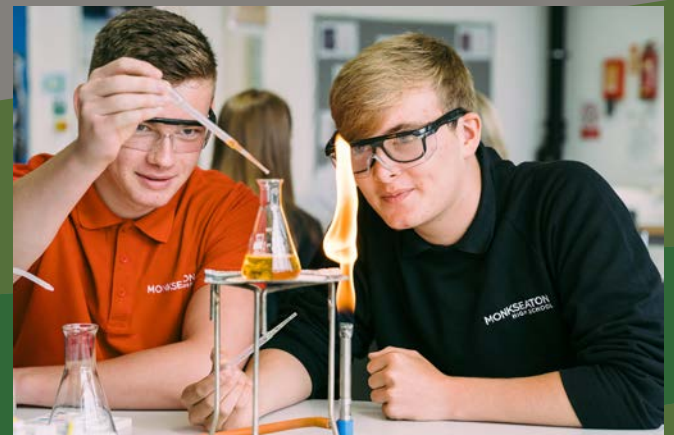
# Student Council

The School Council is a **great opportunity** for students to get involved in the running of the school.

It is made up of representatives from each year group who are elected in September by the students and act as their official voice. The Council discusses and decides on things that matter to them and their peers, and are important for the whole school. We believe it is crucial for students to have a platform for voicing their opinions and suggestions to develop their wider school experience.



‘  
The school has recently been awarded the Rainbow Flag Award, which demonstrates pupils’ commitment to promoting awareness and acceptance of difference. Pupils are unequivocal in their view that everyone is treated equally, and difference should be embraced and celebrated”  
Ofsted 2019



# Curriculum

At Monkseaton High School we believe in providing all our students with **the opportunity to achieve** regardless of their background.

As a school we aim to promote: inclusion, equality, opportunity, achievement. We strive to ensure that our students follow a broad and balanced curriculum to enable them to achieve success and encourage individual development, leading to confident, successful learners.

We are committed to providing our students with a curriculum and opportunities that allow them to grow academically, socially and emotionally into young adults who are equipped with the skills to be successful in the world of work and beyond. We operate a two-week timetable with 50 lessons per fortnight to maximise the curriculum time within each subject area.

## Year 9 - (GCSE Skills Year)

Students study a wide and varied curriculum during Y9, which is viewed as a foundation year, and aims to ensure they are prepared for their GCSE courses. Our ultimate goal is to develop them into confident and successful learners both by developing their attitude to learning and learning habits alongside their knowledge and thinking skills, thereby enabling them to succeed in their exams.

All students study the National Curriculum subjects, which are: English, Maths, Science, MFL (French and Spanish), Technology, ICT, Art, History, Geography, PE, Music/Performing Arts and **Personal Development** (which includes elements of RE, SRE and Citizenship).

## Year 10 and 11

The KS4 curriculum provides an appropriate balance between 'traditional academic' subjects and vocational pathways to meet the needs of individual students. We firmly believe that students will be successful if they access the right course based on their interest and abilities; we are committed to providing personalised learning pathways to enable all our young people to achieve. All students study GCSE English and Maths, with extra support or intervention when required. Science is compulsory and is worth the equivalent to 2 GCSEs. All students study GCSE English Literature as part of their English course. PE is compulsory for all.

We have split our curriculum into 'pathways', designed so that students are steered towards subjects where they will have the best chance of success, leading to rewarding and fulfilling careers based on successful outcomes.





Students will choose 3 or 4 options from one of the three pathways — Opportunity, Equality and Inclusion, as well as indicating a reserve choice.

Opportunity - students follow an EBACC route designed to fulfil all criteria of the EBACC performance measure (all buckets of the Progress 8 Measure).

Equality - students follow a route designed to fulfil all buckets of the Progress 8 performance measure but cannot achieve the EBACC measure as they do not study a foreign language

Inclusion - students follow a route designed to fulfil the Progress 8 performance measure. These students also access the ASDAN (CoPE) qualification to boost confidence and self-esteem as well as gaining a qualification to the equivalent of 1 GCSE.

The following courses are currently offered as Options, though the curriculum offer is reviewed annually and amended to suit the needs of the cohort and individuals:

GCSE: Art, Business Studies, Computer Science, French, Geography, History, ICT, Media Studies, Music, Photography, PE, Spanish.

BTEC: Health and Social Care, Engineering, Hospitality, Sport, ASDAN.

## Year 12 & 13

Monkseaton's Sixth Form is open to students from other schools, as well as our own students. We pride ourselves on having a small Sixth Form, where individuality is nurtured and valued in an inclusive environment. We have a dedicated, modern Sixth Form study area with excellent ICT and computer access.

We offer different pathways to meet the individual interests and abilities of our learners.

### The Academic Pathway

The academic pathway is usually taken by students who have achieved mainly grades 9-6 in all subjects. Students on these pathways go on to apply for university after Sixth Form.

### The Combined Programme of Study

This pathway allows students the freedom to combine academic and vocational courses, giving the flexibility to access a pathway with a combination of exam and coursework assessment, whilst having the option for many different routes post 18, including university, apprenticeships and employment.

### The Level 3 Vocational Programme of Study:

This programme allows students to specialise in one or more subject areas. This pathway leaves the option of university open – but only in courses that follow a similar subject area. Students could also access apprenticeships and direct employment after sixth form.

There are many A Level and BTEC Level Three courses. All courses demand an entry requirement. We offer the opportunity for students to re-sit English and Maths at GCSE, with further work experience opportunities available in the summer term. These are covered in more detail in our Sixth Form Courses Guide.

“

Students show high levels of engagement in the subjects they study. They are focused and want to do well”

Ofsted 2019



“

Extra-curricular opportunities develop pupils' personal and social skills.”

Students also profit from accessing extra-curricular activities to enhance their personal development and welfare

Ofsted 2019

”

# Enrichment

We are **committed** to **developing** all round individuals and provide a range of **enrichment opportunities** for all our students.

These include sports clubs, extra-curricular activities, field trips and cultural visits at home or abroad. We believe offering these activities can enrich learning, engage our students and bring relevance across the curriculum in all years.

**Included in the many enrichment opportunities across all subjects are:**

- UKMT Maths challenges
- Culture Cafe
- MHS Literary Society
- Rock School
- Business Consultants
- Pride Club
- Computing Club
- Go Green!
- Language visits including the opportunities to travel to France and Spain
- Sporting competitions against local schools

**Students are taken off timetable for special events, such as:**

- Diversity Day including health awareness sessions
- E-safety events
- Visits to universities, colleges and workplaces
- Work experience and careers events
- Sports Day
- Activities Day

“

We are one big family”

Student



“

Students access a work experience programme that taps into their interests and aspirations. Students also profit from accessing extra-curricular activities to enhance their personal development and welfare

”

Ofsted 2019

### **STEM (Science, Technology, Engineering, Maths)**

STEM subjects open up a variety of career options so it is important to bring them alive in their everyday contexts. We aim to offer a range of STEM based opportunities to our students both in and out of the classroom. Through Science, students experience masterclasses, Medicine and Dentistry taster days as well as visits from local universities. Visits to local science establishments such as The Centre for Life, Dove Marine and The Institute of Genetic Medicine also run alongside the curriculum. Furthermore, students have opportunities to participate in projects and clubs including Airingers facilitated by Nissan, Design our Tomorrow and other STEM events through the local authority.

#### **Charging Policy**

While all normal school activities are free of charge, a number of additional educational events are organised to enhance the curriculum and parents/carers may be asked to make a contribution towards the cost. Without such contributions, many worthwhile educational activities would not be possible. Parents and carers will be fully informed in advance of any costs involved for activities in which your sons/daughters participate. Typically, the money goes to meet expenses associated with educational trips, transport, residential visits, etc. We try very hard to keep the charging of such events to a minimum. Please refer to school website for a full copy of our policy.

# Teaching and Learning

In order to ensure that all of our students, from Year 9 to Sixth Form, make **as much progress as they can** during their time with us, teaching and learning is central to everything we do.

We have an established culture of sharing the best practice and teachers at Monkseaton know that they have a commitment from the school to support them in their professional development. Our most recent Ofsted report recognises this, stating "Leaders have created a culture where staff can learn from one another. As a result, morale is high. Staff appreciate the opportunities they can engage in to learn from each other and share the good practice that exists in the school. Collaboration is a strong feature of the school and staff enjoy learning with and from one another." Ofsted, 2019

Every Tuesday, staff participate in our Continuing Professional Development programme. Working on a cycle, our sessions ensure that staff have the opportunity to discuss ideas with colleagues on a range of pertinent issues and strategies. Delivered by staff, our training is interactive, challenging and engaging. During our Open Door weeks, all staff have the time to visit other lessons across the school to encourage discussion; this also enables experienced teachers to support those who have more recently joined the profession.

“

Teachers' strong subject knowledge and expertise are clear. They use this well to plan learning that engages pupils and sequence activities so that pupils can build their knowledge and skills over time

”

Ofsted 2019



“

Pupils' strong relationships with teachers and between each other enable them to engage in their learning well. Teachers know the pupils well. As a result, pupils are encouraged and motivated to do well and make strong progress”

Ofsted 2019





“

The school's work to promote pupils' personal development and welfare is outstanding. They go the extra mile for pupils to ensure they are safe and well cared for

”

Ofsted 2019

# Pastoral and Learning Support

Monkseaton High School strives to ensure it is a **caring, inclusive** high school where **individual needs are met through a holistic approach, creating a safe, nurturing environment.**

Monkseaton High School believes that pastoral care and learning support is at its most effective when there is a balance between support and challenge. The Learning Support Team, the pastoral team, staff, learning mentors and external agencies work collaboratively to personalise support according to individual needs and to give students a high sense of morale.

**We believe that pastoral care and learning support should:**

- Create a caring and secure environment conducive to lifelong learning
- Encourage a sense of belonging, pride and commitment to the school
- Encourage co-operation and teamwork
- Nurture relationships that are characterised by mutual respect and constant encouragement to develop self-esteem, self-discipline and responsibility
- Recognise the specific and changing needs of the individual
- Ensure effective communication and dialogue between all members of the school community, including parents
- Demonstrate positive interactions between staff and students and be exceptional role models

## **Transition to high School**

Making the move to high school can be a very anxious time for both children and their parents/carers but here at Monkseaton we do our utmost to ensure that the transition is as straightforward and enjoyable as possible.

We encourage prospective parents to attend our Open Evening in September, when you can get a feel for the school in action.

Throughout the year, we have opportunities for students and parents to familiarise themselves with the school. Staff will visit middle schools to teach lessons and deliver extra-curricular activities at various times of the year. In May, your child will be visited in their middle school by our Head of Year and other members of the transition team. All students attend two days in July, when they will meet their form tutor as well as build relationships with other students in their form class. Extra taster sessions are available for those who may find transition particularly difficult.



“

Staff and student relationships are a strength of the sixth form. Students speak confidently about how their teachers support them and offer them timely advice and guidance”

Ofsted 2019





# Sixth Form

We are delighted that our Sixth Form **continues to go from strength to strength**, which has most recently been reflected in our **100% pass rate**

We achieve this by ensuring our students are supported and guided to make the right subject choices through a journey which begins in Year Ten and carries on until they leave Sixth Form. We invest a great deal of time in ensuring students access the right courses, are challenged to succeed and are aspirational in their goals.

#### **Some of the formal opportunities include:**

- The Post-16 Courses Evening
- Several individual guidance meetings with members of the Leadership or the Sixth Form team
- A 'Day in the Sixth Form', which presents an opportunity to shadow a current member of the Sixth Form with similar potential subject choices
- The chance to meet our Connexions Careers Advisor on request
- Regular information and guidance updates in assemblies and tutorials throughout the remainder of the year

All students are now required to remain in education, employment or training until the age of eighteen. It is therefore important that we make transition from Year Nine to the end of their education with us as smooth as possible. We live in an ever more competitive world in terms of jobs, apprenticeships and university places and it is therefore very important to make best use of all the guidance and support available.

#### **In our Sixth Form we pride ourselves on the following:**

- Excellent teaching
- Pastoral support from an expert and caring team of tutors
- Opportunities to develop confidence and self-esteem through extension or extracurricular activities
- A skilful balance of support and challenge to ensure students fulfil their potential



“

Pupils benefit from a variety of high-quality careers, information, advice and guidance. This has led to a greater proportion of pupils accessing appropriate education, employment or training”

Ofsted 2019

# Careers Education, Information, Advice and Guidance

Careers education, information, advice and guidance form **major elements of the compulsory curriculum** for each student.

Delivered through our pastoral programme and drop-down days, we offer preparation for career choices and further education, as well as individual guidance and support. At various points throughout their time at Monkseaton High School, all students receive impartial careers advice from our Connexions Adviser, who is located in our Careers' Hub

## Personal Development Curriculum

At KS3 and 4, all students participate in a personal development curriculum programme, covering a diverse range of topics from eating disorders to sex education to religious education. PD make topics meaningful and real for students, who participate in structured discussions to fully explore viewpoints and deepen understanding.

Furthermore, all students follow an enriching tutorial programme, offering quality information, advice and guidance throughout the year. This includes whole year group assemblies, talks from guest speakers and time within tutorial to explore issues further. The tutorial programme also tackles the moral, social, political and spiritual aspects of sex education and economic issues of our time, helping our students to become informed on all contemporary areas reflected by their age group.



“

My work experience placement will definitely help me in the future as it has taught me important skills that I can transfer to future jobs and studies ”

Student

# Work Experience

Our students access quality non-qualification work experience in Years Ten and Twelve as part of their study programme. We believe **this is an important part of the school curriculum** as it helps students to learn more about the world of work.

Students gain a better understanding of opportunities in the workplace and will undertake extra responsibility which will encourage more independence in their learning and way of life. They are challenged to develop aspects in their skill set such as initiative, resilience and time management. It also allows them to explore potential career paths.

## Benefits to students

- Students gain an appreciation of how to approach life in modern Britain positively
- Young people are more likely to be successful in choosing a post-16 option if they have had the benefit of some effective work experience
- If students haven't yet made a decision regarding the career they want to follow, work experience is a perfect way for them to sample the options available to them
- Work experience allows students to gain a real appreciation of work in a chosen industry
- They will be required to operate in a professional environment which will allow them to work with providers and ask questions about potential careers
- Completing work experience allows students to demonstrate passion and interest in an area of their choice. Evidence they have undertaken work experience shows an employer they are motivated to get into a chosen career and have taken the time to research their potential options
- The preparation for work experience also involves students reflecting on their successes and failures to date, whilst providing them with a CV and personal letter for reference
- Many post-18 destinations require work experience as part of the entry requirement to the course. Examples include primary education, teaching, nursing and dentistry.

# Celebrations

We believe in the **value of praise and celebration of achievement**. This happens on a daily basis in lessons, with teachers praising and encouraging students.

In each lesson staff issue RESPECT points which are kept electronically on each student's record. Students who have achieved 95% positive points qualify for one of our Bronze Rewards, those over 97% a Silver Reward, and those with 100% a Gold Reward.

We hold an annual Awards Event where each subject area will select a student to be celebrated for their progress as well as enthusiasm for the subject. There is also recognition for attendance and work ethic, while Pastoral Raising Achievement Leaders and the Headteacher have their own awards.

We regularly celebrate achievement in sports and the arts through our assemblies.

At the end of Year 11 students are invited to attend the prom. The prom is a celebratory evening, which is one of the highlights of the school calendar. At the end of Year 13 students organise a leavers' meal with teachers to celebrate their efforts and achievements over their time with us. For the vast majority of students this is five years and the event provides an opportunity to say goodbye to all staff at Monkseaton High School where treasured relationships have been formed.

“

Pupils' strong relationships with staff and each other are a cornerstone of the school”

Ofsted 2019

“

It is like one  
big family.  
Everyone knows  
everyone, staff  
and students  
included ”

Student



# Safeguarding and Attendance

## Safeguarding

We believe that safeguarding students is everyone's responsibility. In order for us to fulfil this role, we work in partnership with parents, carers and other professionals to ensure that together we secure the best possible outcomes for all students.

Students can feel confident that our teaching and support staff will do their utmost to provide a safe environment in which they can access the help they need, including during times of personal difficulties.

All our staff are appropriately trained in safeguarding and know when and how to share concerns about the welfare of students, and how to involve parents and carers in that process. We are very proactive in our safeguarding practice, enabling us to support students at the earliest opportunity.

## Attendance

Good attendance is one of the keys to a happy and successful school career. We have a dedicated team of staff who work with children and their families to ensure good attendance of 95% or above. There is a direct link between attendance and how students achieve. It is important that students attend to achieve their potential.

“

Students feel safe and know how to keep themselves safe, physically and emotionally. The respect and tolerance that permeate the main school are further strengthened in the sixth form as students are respectful, tolerant and, importantly, act as positive role models to the younger pupils in the school

Ofsted 2019

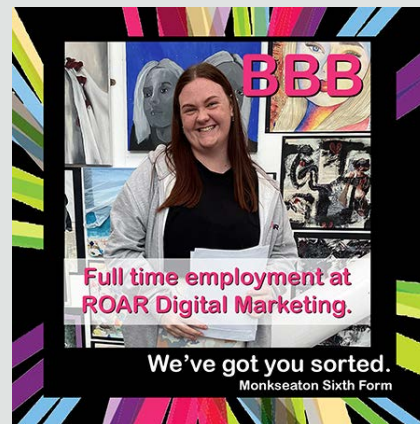
”





# Destinations

Our students leave us at the end of Sixth Form to go on to some fantastic destinations. These include a range of Russell Group universities and prestigious Apprenticeships.



# Ofsted 2019

Teachers' strong subject knowledge and expertise are clear. They use this well to plan learning that engages pupils and sequence activities so that pupils can build their knowledge and skills over time

Ofsted 2019

Leaders' firm commitment to give pupils access to a curriculum that prepares them for the demands of life in modern Britain is clearly evident

Ofsted 2019

Staff appreciate the opportunities they can engage in to learn from each other and share the good practice that exists in the school. Collaboration is a strong feature of the school and staff enjoy learning with and from one another

Ofsted 2019

Students' attitudes to their studies are a strength of this phase of the school. As a result, they achieve well over time

Ofsted 2019

  
Ofsted

Good  
Provider

**Governors have a wide range of skills and expertise. They genuinely care about the school, its pupils, staff and the local community**

Ofsted 2019

**Pupils' attitudes are excellent, and they have highly respectful attitudes towards anyone that may be different from themselves**

Ofsted 2019

**Pupils' attitudes to their learning are very positive**

Ofsted 2019

**Pupils enjoy their time at school and they demonstrate this through their words and actions**

Ofsted 2019

**Pupils use the feedback they receive from teachers well to reflect on their learning and improve their ideas. Pupils are committed to improving their work and learning from their mistakes**

Ofsted 2019

**The school's work to promote pupils' personal development and welfare is outstanding**

Ofsted 2019



For more information please visit our website:

[www.monkseaton.org.uk](http://www.monkseaton.org.uk)

Monkseaton High School  
Seatonville Road, Whitley Bay  
Tyne & Wear NE25 9EQ

T. 0191 297 9700

F. 0191 297 9701

E. [office@monkseaton.org.uk](mailto:office@monkseaton.org.uk)

